



## Shree Sakat Valley

2 BHK LUXURIOUS APARTMENT & SHOPS

**Developers :**  
Sakat Infrastructure

**Architect :**  
Shaurabh Verma  
Prashant Shah  
9th Street Architect

**Structure Eng. :**  
Achal Parikh

**Contact :**  
98791 34988  
99132 73888

www.vedbox.co.in 90 99 500 168

Site : **Shree Sakat Valley**, 200 ft S.P.Ring Road, B/h. Sarthi Bungalows, Nr. Erth School, New Chandkheda, Ahmedabad - 382 424.

# Shree Sakat Valley

2 BHK LUXURIOUS APARTMENT & SHOPS





# Shree Sakat Valley

2 BHK LUXURIOUS APARTMENT & SHOPS

An elegant space away from the maddening crowds,  
nestled in cozy comfort.  
A compact apartment giving you the freedom to create  
your own unique spaces





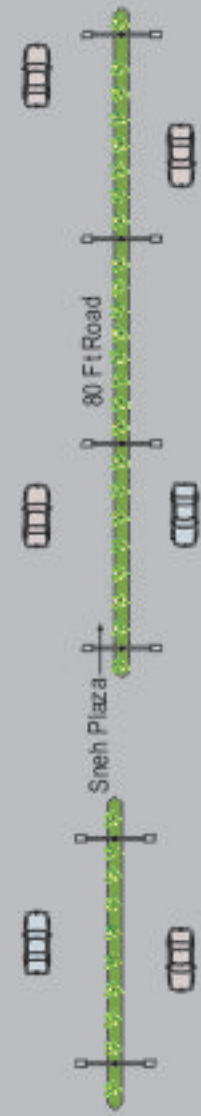
# Ground Plan



Mahesana - Kalol High Way



S.P. Ring Road



Shree Sakat Valley  
2 BHK LUXURIOUS APARTMENT & SHOPS





# Typical Plan



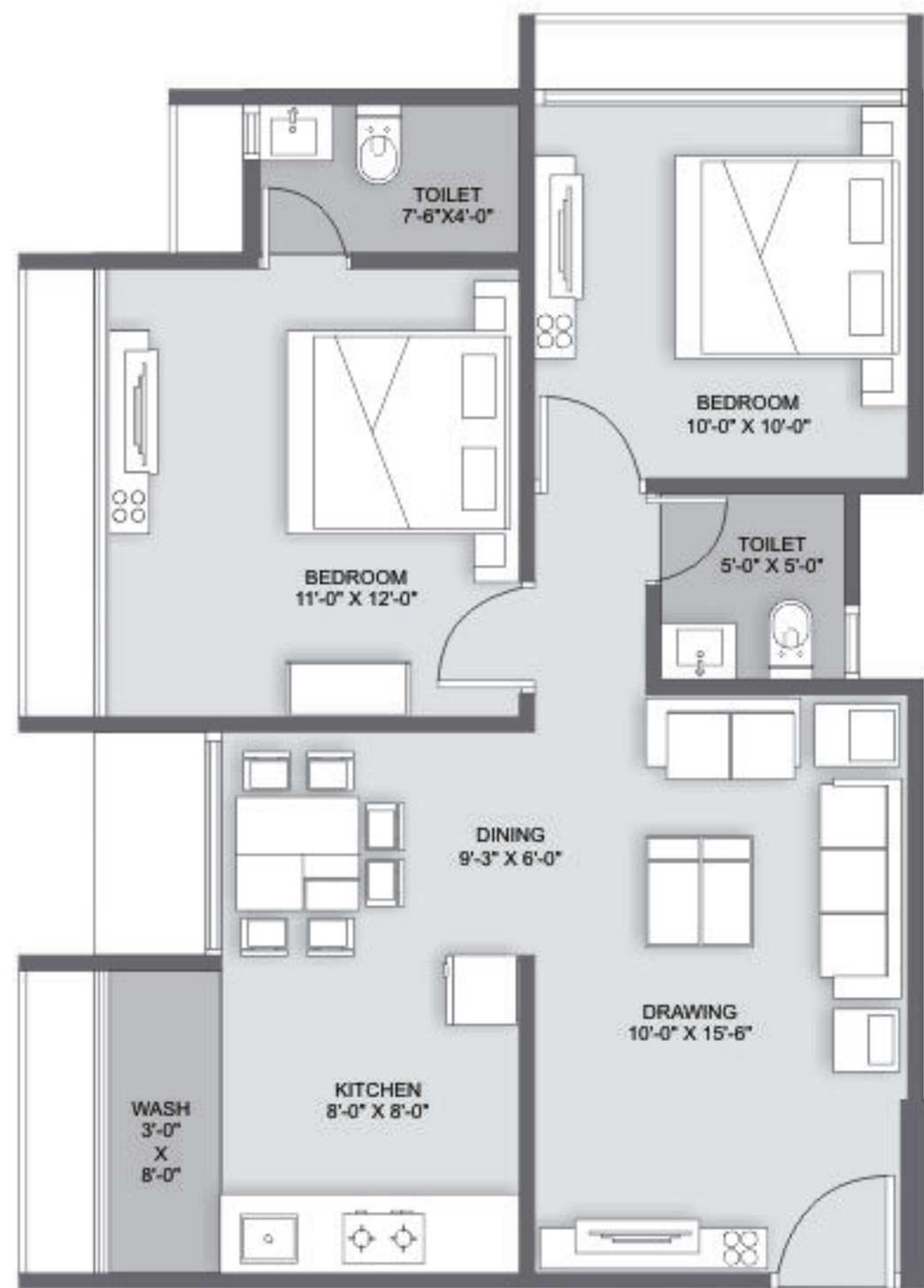
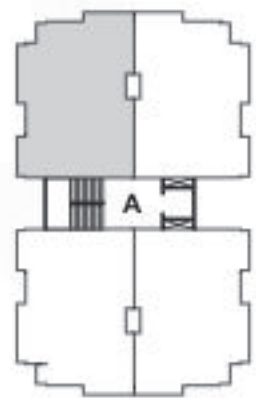
Mahesana - Kalol  
High Way

S.P.  
Ring  
Road

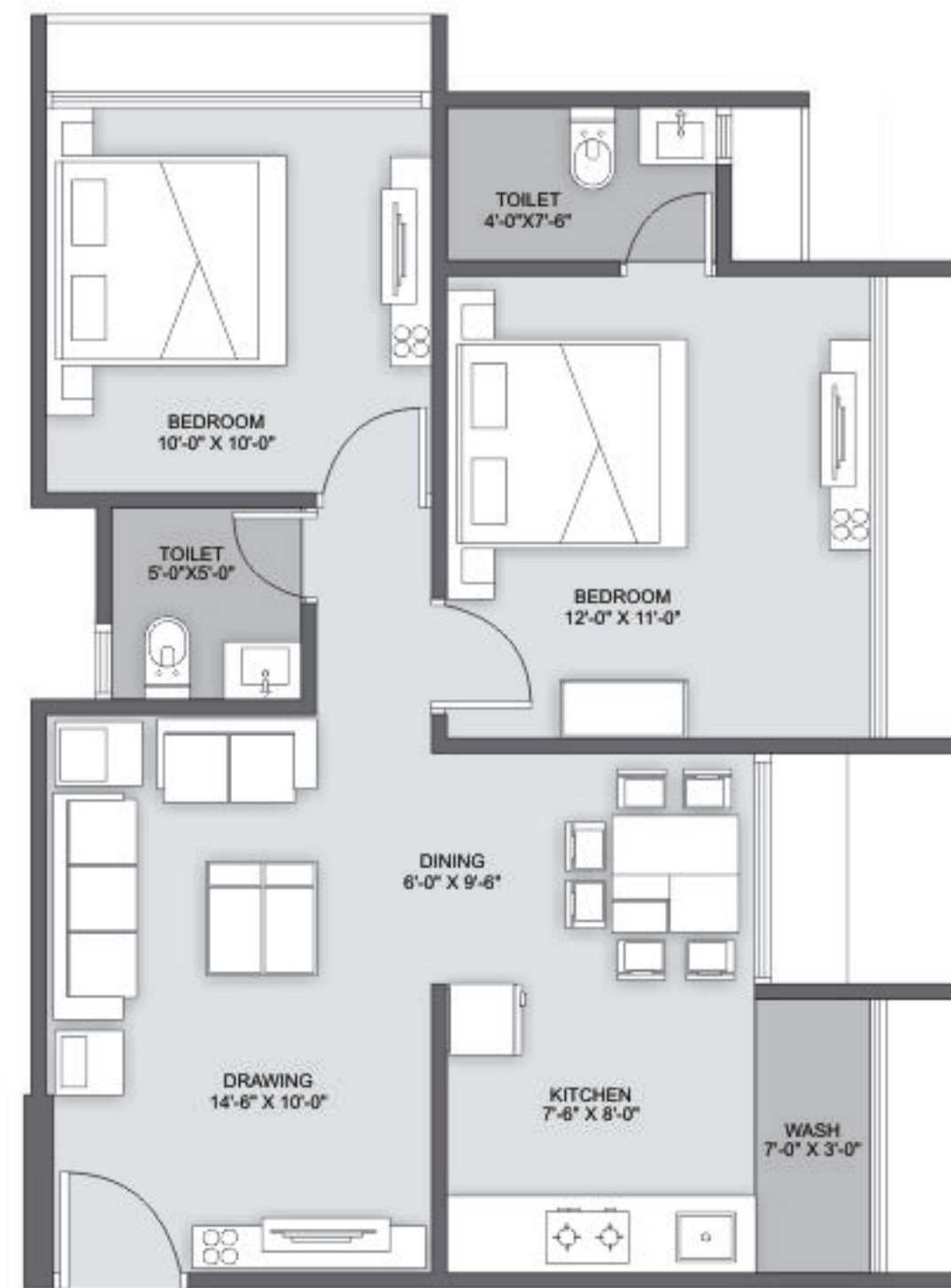
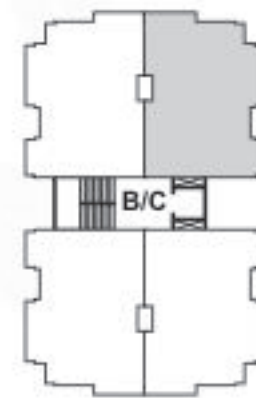




# BLOCK-A



# BLOCK-B,C







#### AMENITIES

- CHILDREN PLAY AREA
- SCHOOL PICK-UP STAND
- 24 HOURS WATER SUPPLY
- 24 HOURS SECURITY
- WALKING TRACK
- SENIOR CITIZEN SEATING AREA
- C.C. TV Camera
- BEAUTIFUL LANDSCAPE GARDEN
- ALL INTERNAL R.C.C. ROAD
- CHECKERS TILES IN PARKING AREA OTHER AREA WITH PAVER BLOCK
- STREET LIGHT

#### NEARBY CONVENIENCES

- |  |   |
|--|---|
|  Airport    |  Shopping    |
|  Hospital   |  School      |
|  BRTS       |  Petrol Pump |
|  Party Plot |  Bus Stop    |
|  Bank       |   |

#### SPECIFICATION :

##### STRUCTURE

Earth quake resistant R.C.C. frame structure

##### FOYER

• Ultra modern entrance foyer

##### BEST QUALITY FLOORING

• Vitrified flooring in all rooms

##### KITCHEN

• Granite platform with S.S. Sink having drain board  
• Designer digital tiles up to lintel level  
• Designer wash basin in common area

##### BATHROOM

• Designer digital tiles on dado & floor

##### DOOR

• Decorative main door with designer laminate along with handle and safety lock  
• Wooden door frames  
• Wooden flush doors

##### WINDOWS

• Powder Coated aluminum section  
• Well polished stone sill  
• Full size windows in living room & bedroom for air ventilation

##### ROAD

• RCC road for internal campus

##### WATER TANK

• Underground & overhead water tank in each building

##### TERRACE

• Double coat fully water proofing with china mosaic

##### ELEVATOR

• High speed automatic elevators of standard company in each tower

##### ENAMEL

• Acrylic water proof paint on external wall  
• Acrylic colour in common areas  
• Well refined putty on internal walls  
• Premium quality colour on frames

##### ELECTRIFICATION

• Modular switches & concealed circuit wiring  
• Sufficient electric points in all rooms  
• M.C.B in individual flat for safety  
• High ampere special electric points for Freeze, Oven, Mixer, R.O. Plant, Washing Machine, T.V., Geyser

##### PLUMBING

• Concealed modern plumbing system  
• I.S.I brand CPVC & UPVC plumbing & drainage piping

#### NOTES :

• All rights are reserved to Developer for any changes in plans & specifications. • At the time of cancellation of bookings 10% service charge of the total amount paid shall be leaved & balance payment made only after the are table booking. • All Possible Loan Paper Shall be Made available For Pressuring Loan • GEB, AUDA, Legal, Stamp duty, VAT Service Tax, Other Tax, Labourcess, Gas connection & Maintenance deposit charges will be levied extra. • Any additional liabilities due to changes in the by laws shall be borne by member. • Change in external elevation shall not be permitted. Internal changes shall be done only with prior permission and shall be charged extra in advance. • Details & dimensions in brochure are indicative & for the tentative representation only which should not be treated as legal documents. • Possession of the Apartment shall be given only after full payment. • Subject to Ahmedabad jurisdiction.